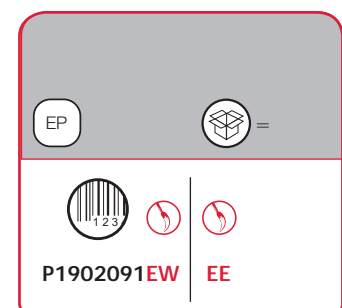
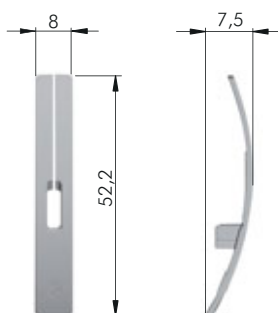
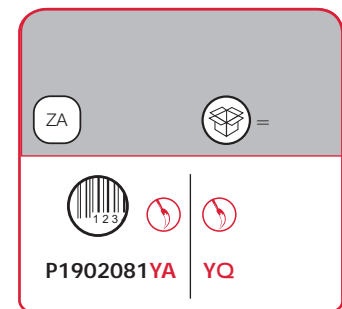
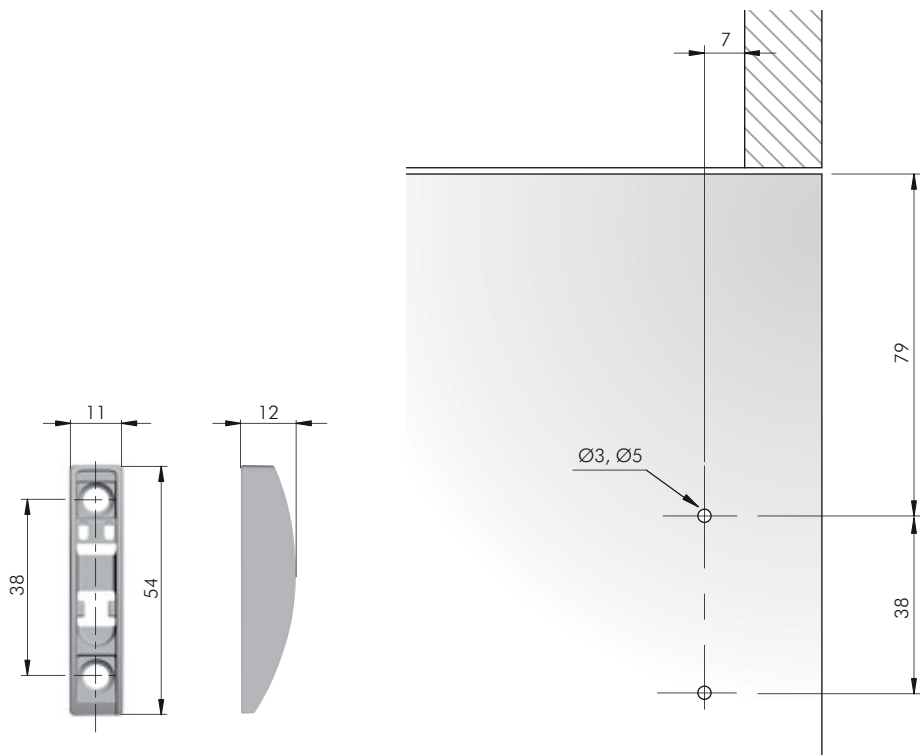




## ALTERNATIVE DOOR BRACKETS

### Door bracket for screw fixing without milling on the door

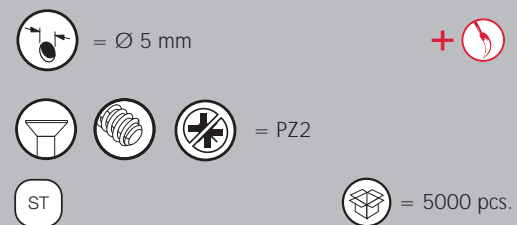
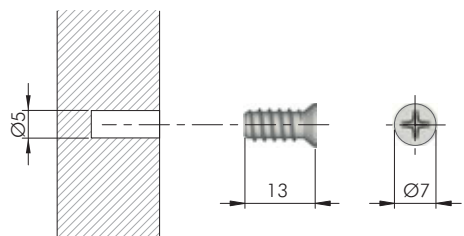
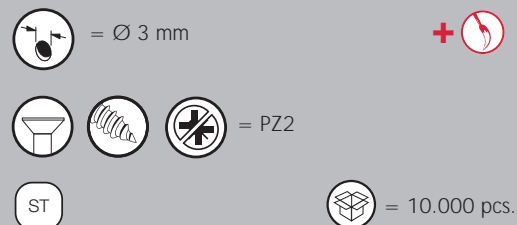
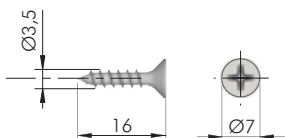


NOTE: Finishes matching between cover caps and door bracket:

EW → YA  
EE → YQ

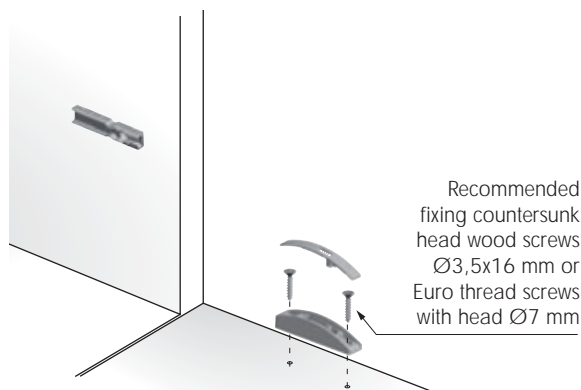


## FIXING ACCESSORIES

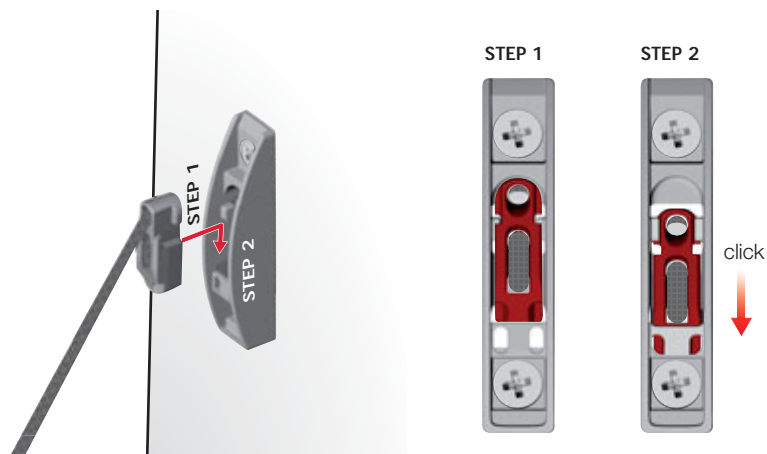


8

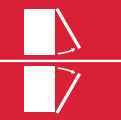
### DOOR BRACKET INSTALLATION



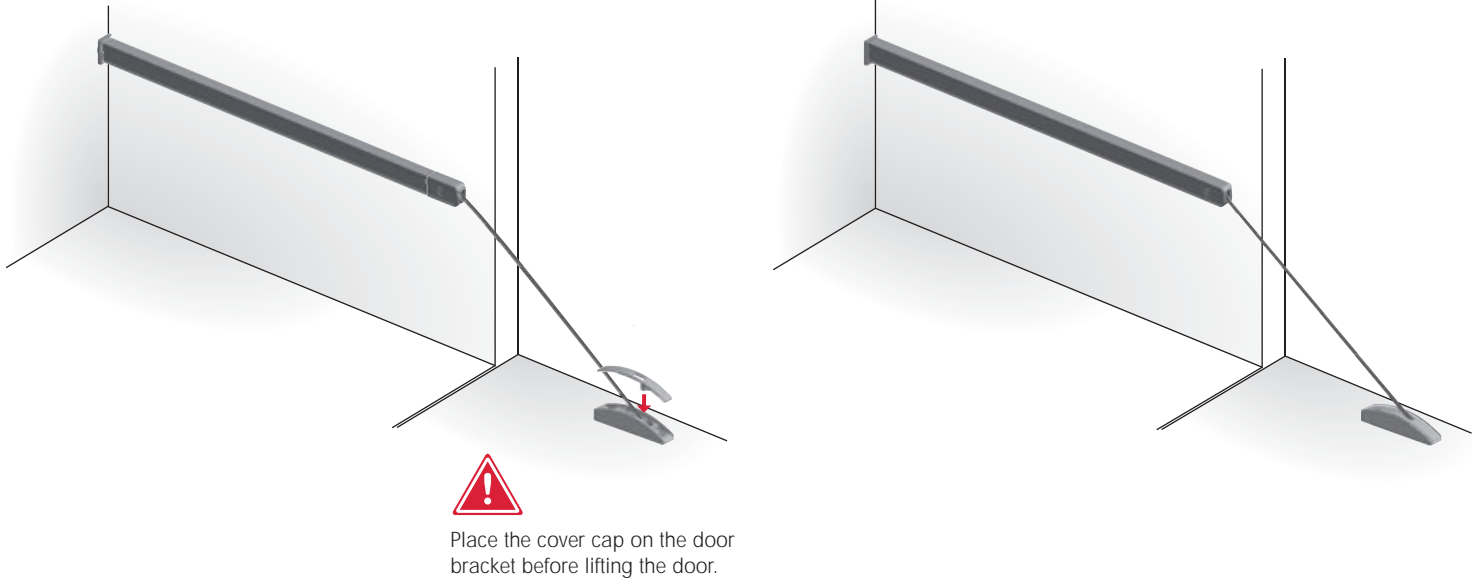
### WIRE INSERTION ONTO THE DOOR BRACKET



Lift the door almost completely to slot the end element of the wire into the door bracket.

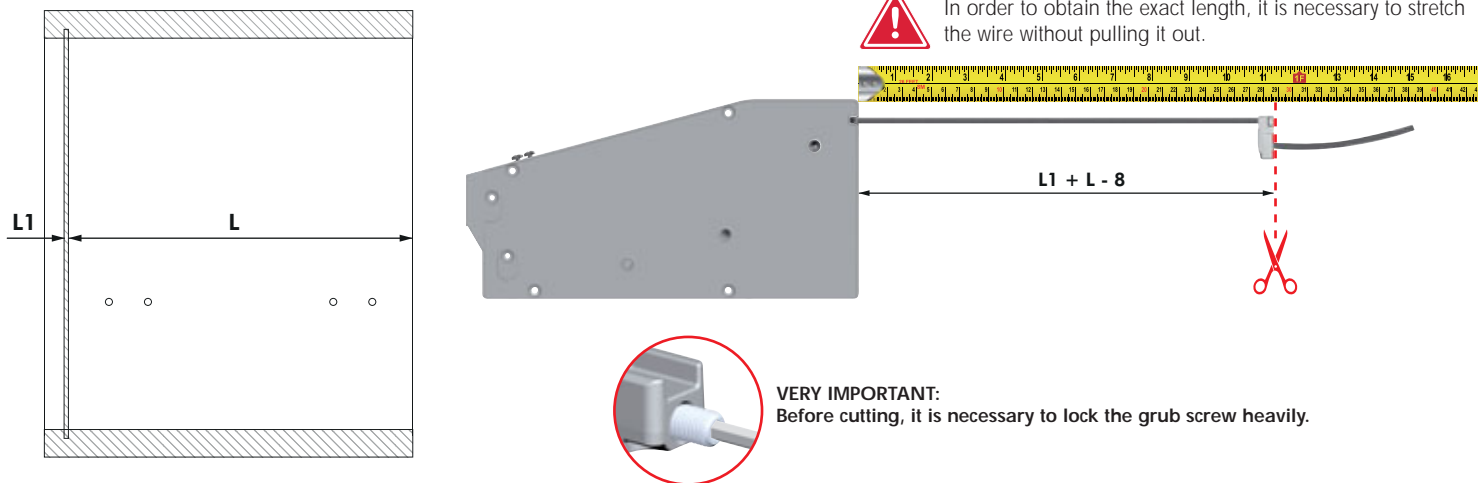


## DOOR BRACKETS COVER CAP INSERTION

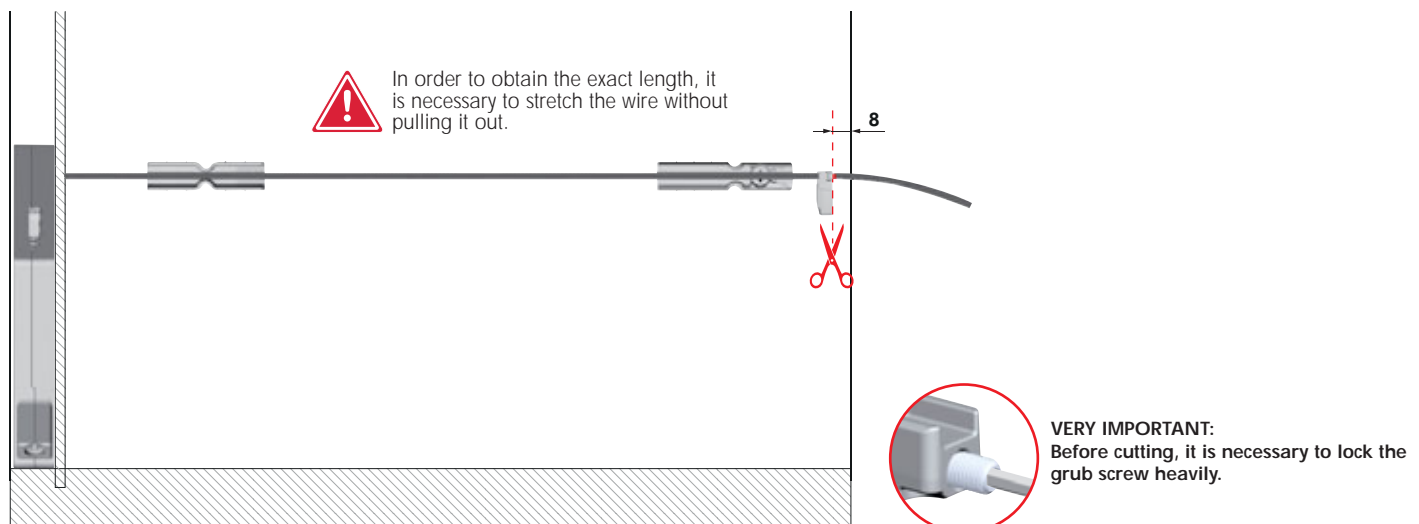


## INSTRUCTIONS FOR WIRE CUTTING

### WIRE CUTTING WITH UNMOUNTED MECHANISM

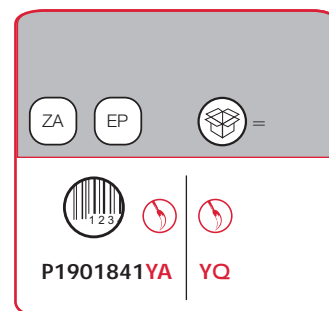
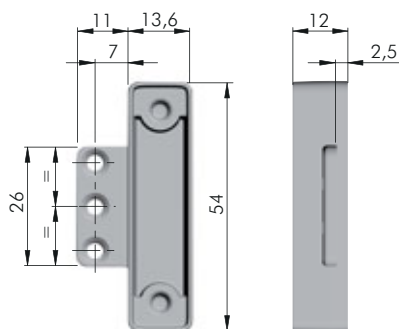
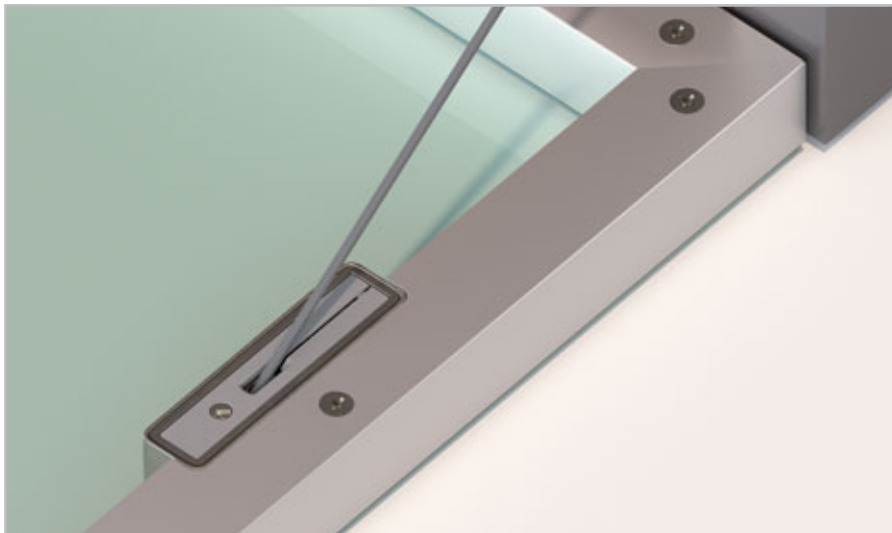


### WIRE CUTTING WITH MOUNTED MECHANISM

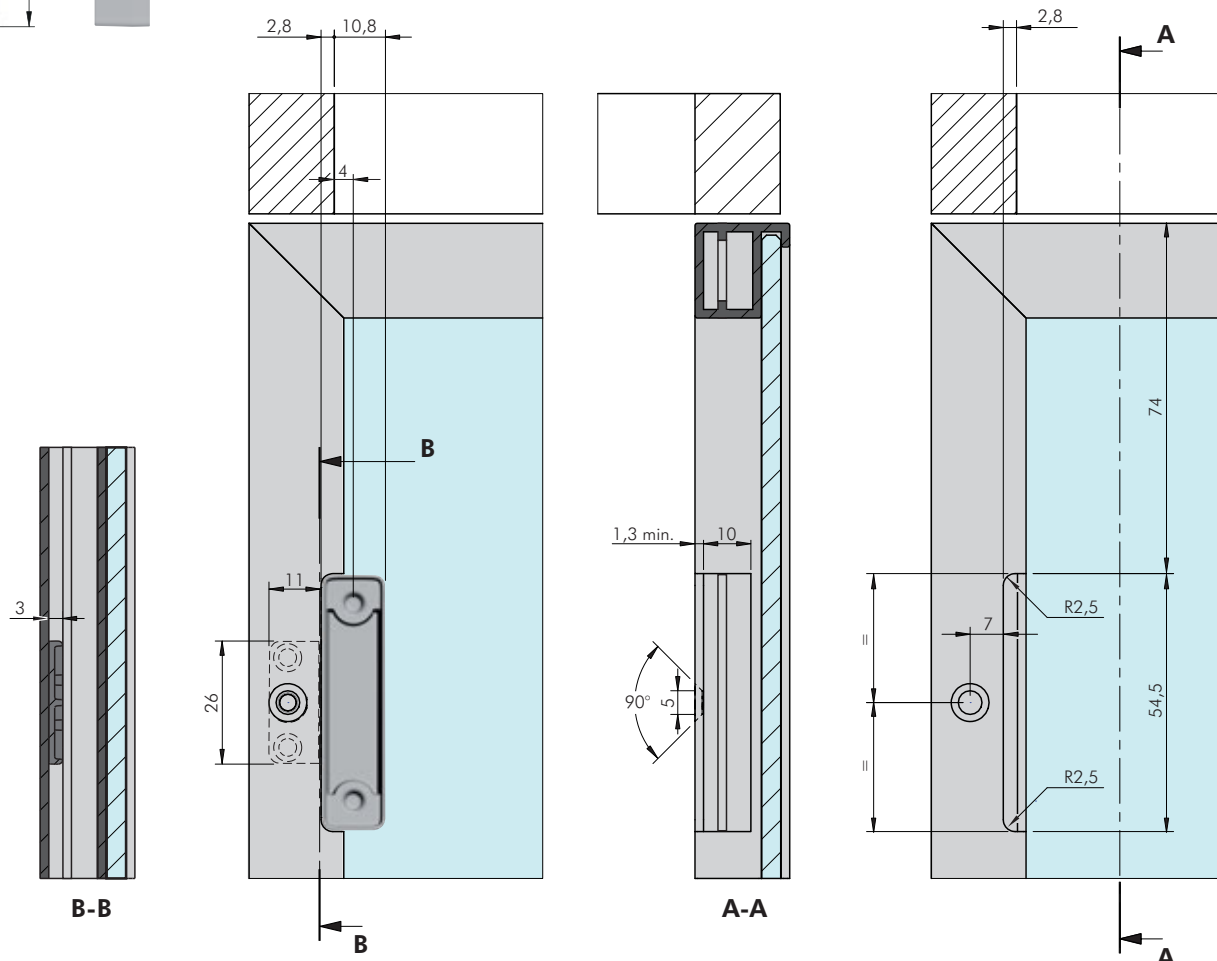


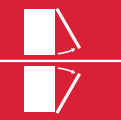


## Door bracket adapter for doors with aluminium profile 20 mm thick

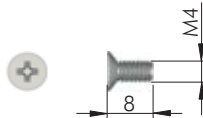


8



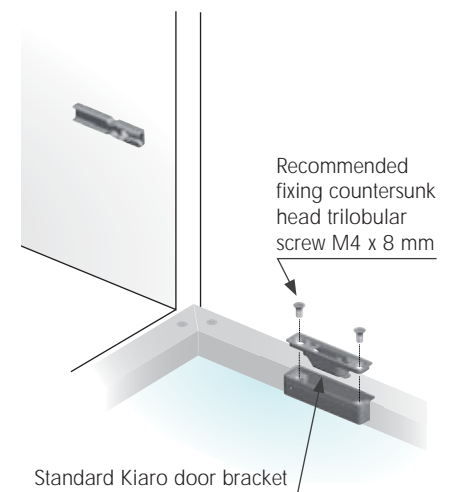
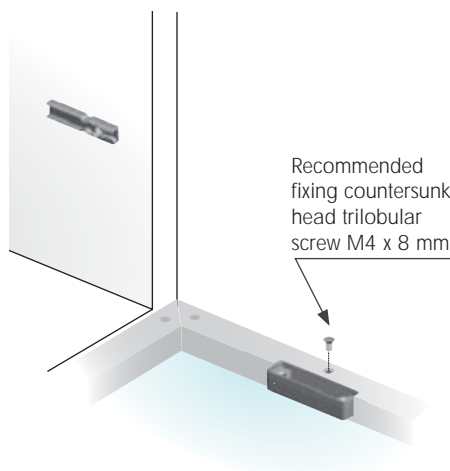
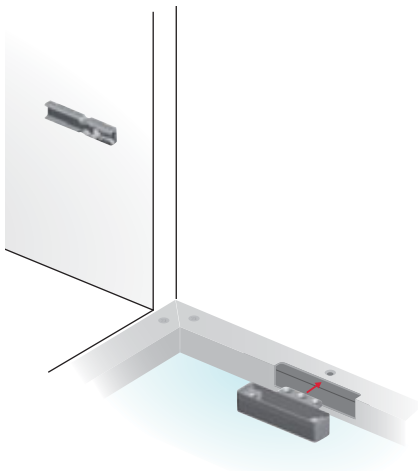


## FIXING ACCESSORY



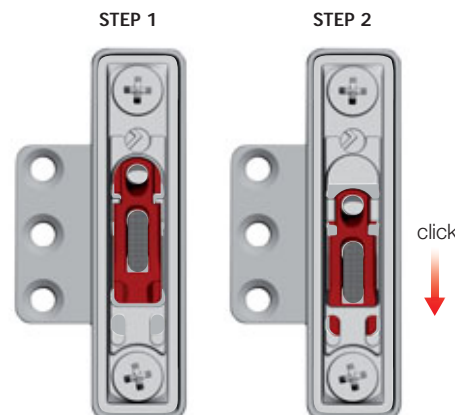
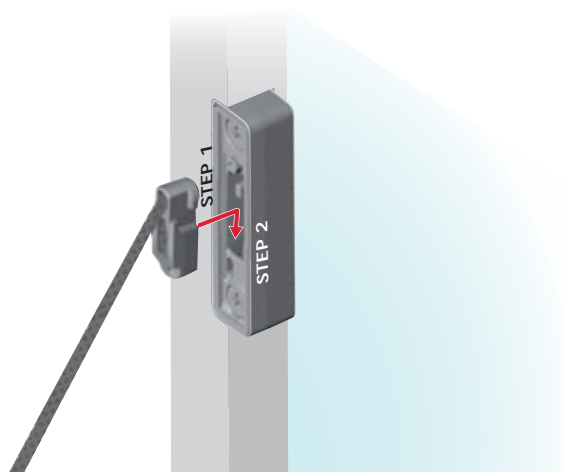
|            |  |  |              |
|------------|--|--|--------------|
|            |  |  | = PZ2        |
| ST         |  |  | = on request |
|            |  |  |              |
| 42906010YA |  |  |              |

## DOOR BRACKET INSTALLATION



8

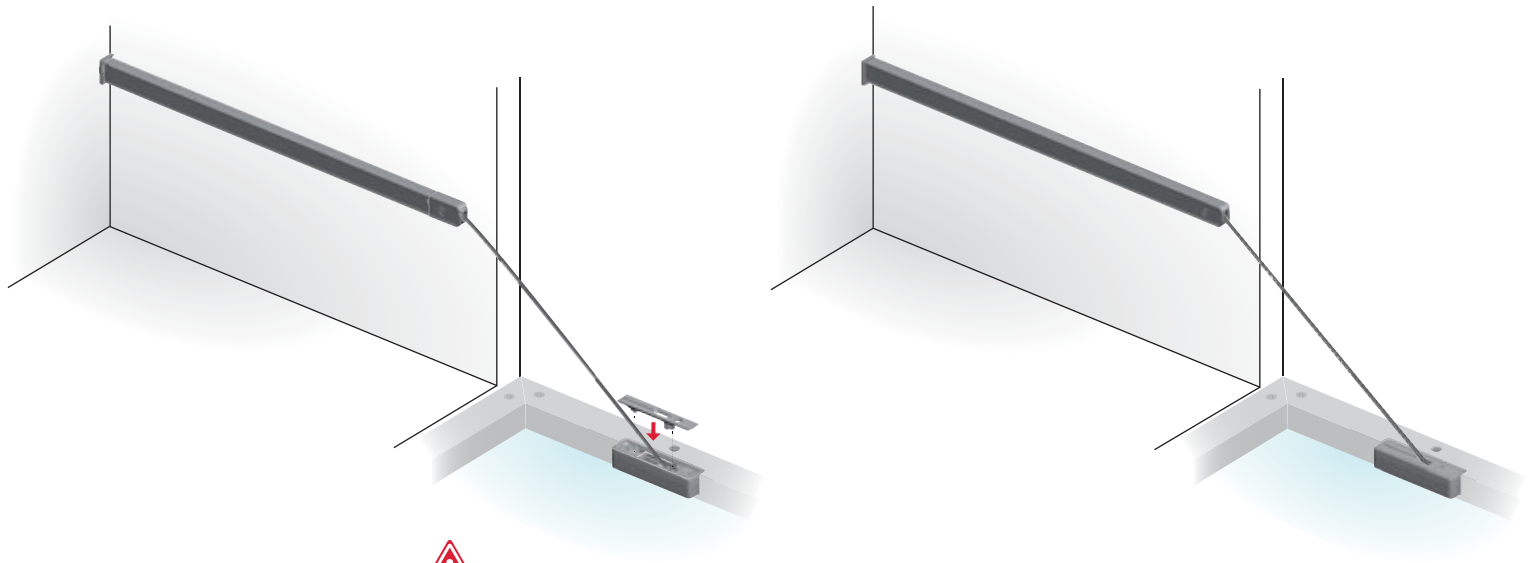
## WIRE INSERTION ONTO THE DOOR BRACKET



Lift the door almost completely to slot the end element of the wire into the door bracket.



## DOOR BRACKETS COVER CAP INSERTION



Place the cover cap on the door bracket before lifting the door.