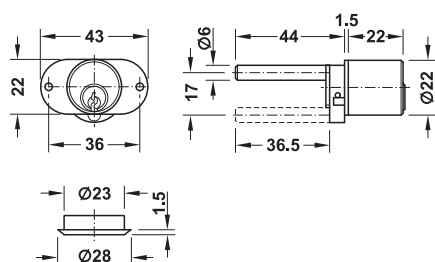


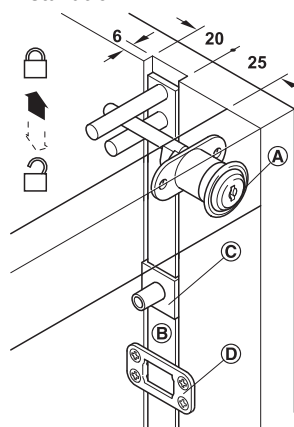
Ⓐ Central locking rotary lock

For installation in lock panels



- > Area of application: For installation in the front panel
- > Material: Housing: Steel, cylinder: Brass
- > Finish: Matt nickel plated
- > Cylinder length: 22 mm
- > Cylinder Ø: 22 mm
- > Travel: 17 mm
- > Closure travel: Key 360°, lifting pin 180°
- > Locking system: With 5 pairs of pin tumblers, key can be removed in open and locked position
- > Key change: 20,000 different key changes possible
- > Installation: For screw fixing

Installation



- Ⓐ Central locking rotary lock
- Ⓑ Central locking bar
- Ⓒ Arresting pin
- Ⓓ Bar guide

Supplied with

- 1 central locking rotary lock
- 2 keys
- 1 cylinder rosette
- Security pass and locking map with master key systems

→ Standard profile

Key change	Cat. No.
Keyed to differ	234.71.200
H 1 – keyed alike	234.71.201

Packing: 1 piece

→ Standard profile, customised

Key change	Cat. No.
Customised	234.71.290

Packing: 1 piece

Order reference

Please specify the required key change (H1–H10000) when ordering.

→ Customised MK/GMK locking system

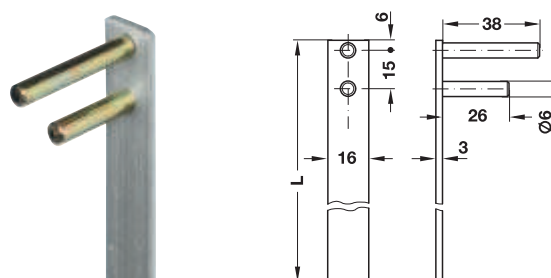
Locking function	Cat. No.
MK locking system	234.71.298
GMK locking system	234.71.299

Packing: 1 piece

Order reference

For master key systems the order must be based on the locking map.

→ Ⓑ Central locking bar



- > Material: Aluminium
- > Finish: Bright

Functionality

When the cylinder is locked by 180°, the lifting pin turns upwards and pulls the central locking bar upwards by the lift into the lock.

Note

We recommend to install the rotary cylinder on the right hand side.

Length L mm	Cat. No.
600	237.10.002
800	237.10.004
1000	237.10.006
1500	237.10.009

Packing: 1 or 20 pieces

Furniture lock accessories	► MB 6.191
Ⓒ arresting pins	► MB 6.195
Ⓓ bar guides	► MB 6.191
Drawer catches	► MB 6.199