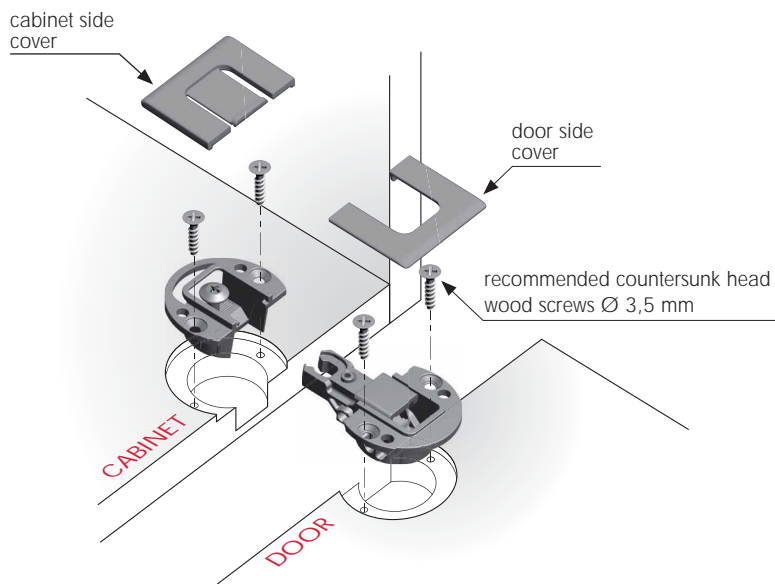
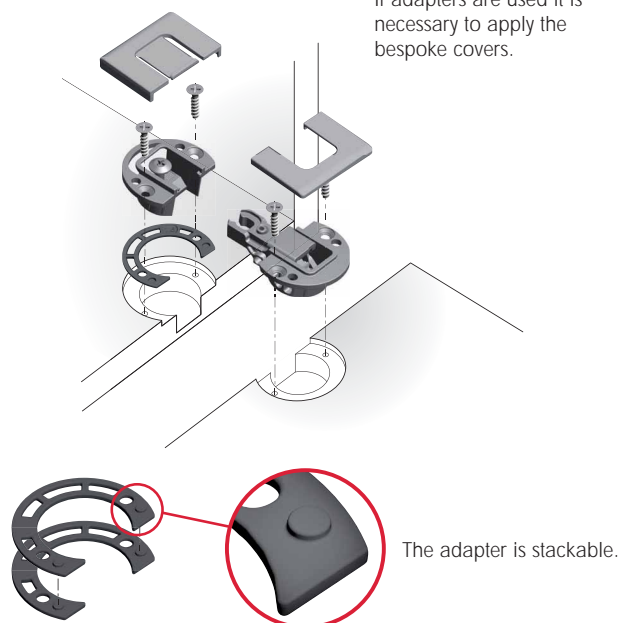
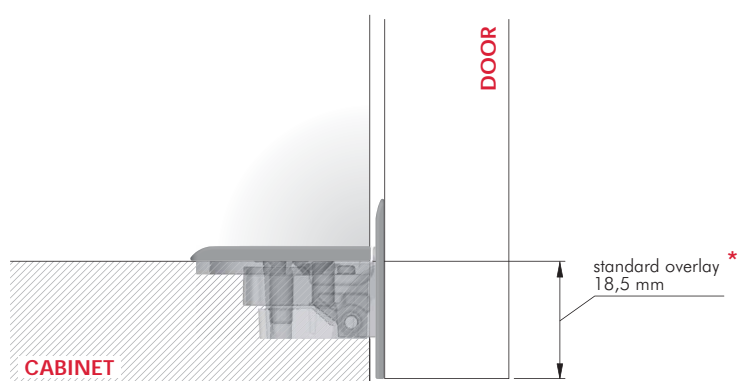




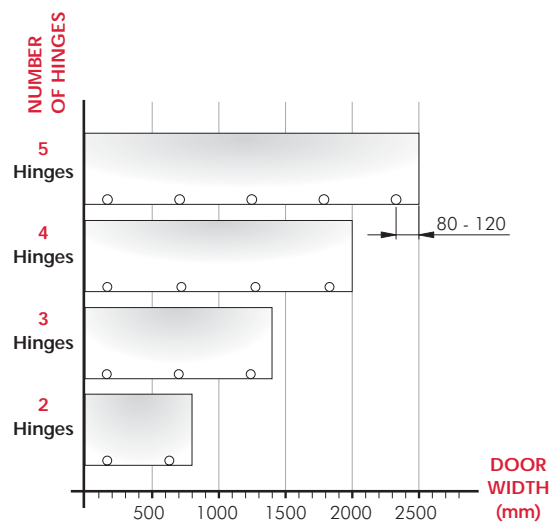
KIMANA SKIN

**STANDARD INSTALLATION**
(Application shown for minimum thickness 18 mm)**INSTALLATION WITH ADAPTERS****VERY IMPORTANT**

If adapters are used it is necessary to apply the bespoke covers.

**OVERLAY WITH STANDARD DRILLING PLAN**

* this dimension can be changed by modifying the drilling plane or by using the spacers.

RECOMMENDED NUMBER OF KIMANA SKIN PER DOOR

Due to various factors, the quantities stated in the chart are indicative.