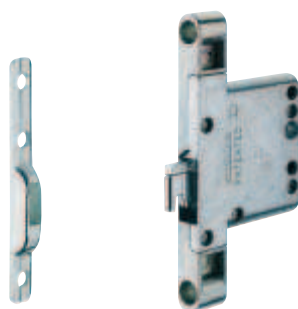


Panel suspension fitting



- > Material: Panel suspension fitting: Zinc alloy, steel suspension plate: Steel
- > Finish: Galvanized
- > Version: Hook-off protection vertical and horizontal in combination with suspension plate

→ Width 12 mm



- > Adjustment facility: Height 15 mm, depth 12 mm
- > Standard: The load bearing capacity of the cabinet hanger is 60 kg/piece, verified by LGA testing in compliance with the manufacturer's specifications

	Mounting	Packing pieces	Cat. No.
Panel suspension fitting	Right	1 or 50	290.54.900
	Left	1 or 50	290.54.901
Suspension plate	–	1 or 200	290.54.909

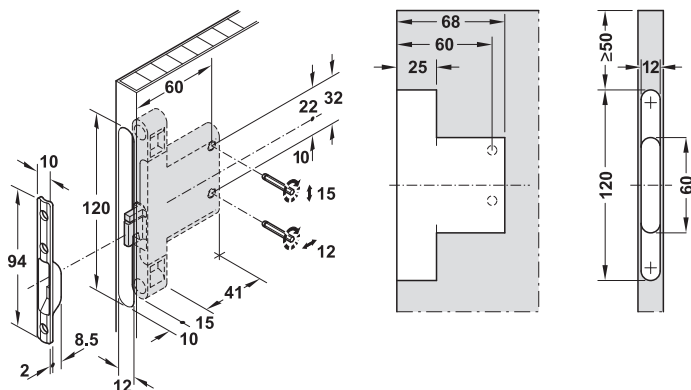
Order reference

Please order cover caps and mounting aid separately.
Please note the safety information for cabinet hangers.

Note

Only use hand screwdriver for adjustment.

Installation



Safety information for cabinet hangers	► MB 7.244
Cover cap	► MB 7.253
Mounting aid	► MB 7.253